

**Bagela
Asphalt
Recyclers**

ASPHALT HAS NEVER BEEN GREENER.

Fresh, Versatile Hot Mix – Just \$20 Per Ton

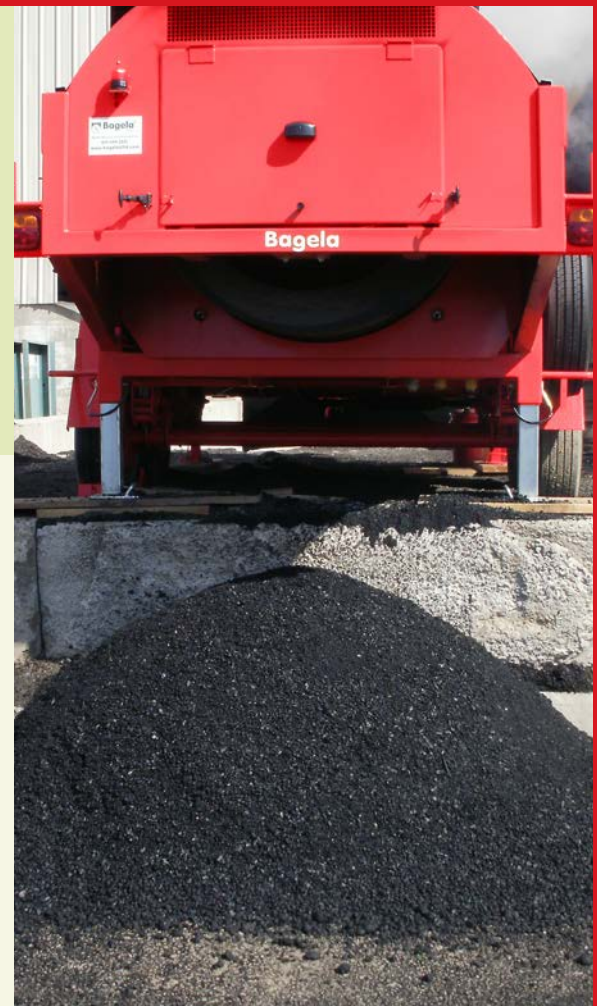
Municipalities and contractors are already saving serious money with ultra-efficient Bagela recyclers.

Patented, Green, Indirect Heating Process

Unlike other recycling processes, Bagela's is entirely convection, with virtually no petroleum burn-off.

Two Models – Two Money-Saving Solutions

Choose from the powerful **BA7000**, for recycling up to 7 tons per hour. Or our heavy-duty, self-contained **BA10000** for 10+ tons per hour.

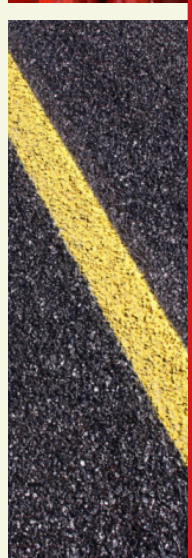


BAGELA ASPHALT RECYCLERS FEATURE A PATENTED INDIRECT HEATING PROCESS.

Unlike any other recycling process, flame doesn't touch the aggregate inside any Bagela Asphalt Recycler – the patented heating process is entirely convection, with virtually no petroleum burn-off (like other asphalt recycler designs).

The process? Existing RAP, chunks, millings or leftover plant mix are loaded into the drum, where it travels through a series of paddles and flights, breaking down to its original coated aggregate form – viable, 330° hot-mix asphalt. Reverse the drum, open the discharge gate, and release one ton of recycled hot mix every 6 minutes.

Until you see it in-person, you may not believe it.



BA10000 COST PER TON

Real-World Scenario

Anticipated Days of Operation	5 days
Hours of Operation per Day	8 hours
Average Tons Required per Day	70 tons
Off-Road Diesel Fuel Cost per Gallon	\$3/gallon
Fully Loaded Labor Cost per Hour	\$62/hour
Estimated Capital Cost of Equipment	\$175,925
Input Material per Ton	\$6/ton

Daily Operating Expenses

Labor Cost (8 hours @ \$62/hour)	\$500/day
Input Material (70 tons @ \$6/ton)	\$420
Maintenance	\$35/day
Fuel (75 gallons @ \$3/gallon)	\$225/day
Total Daily Operating Expense	\$1,180

Total Cost per Recycled Ton: \$18.87

Depreciation	\$2.01/ton
Maintenance	\$.50/ton
Labor	\$7.14/ton
Fuel	\$3.21/ton
Input Material	\$6/ton



MUNICIPALITIES ARE SAVING A TON

	Traditional	Bagela
Asphalt Cost Per Ton	\$105	\$25
Material Purchased, in Tons	5	5
Worker Cost Per Hour	\$50	\$50
Man Hours – Travel Time (Crew of 2)	4	0
Man Hours – Wait Time at Plant	2	0
Gross Product Cost (Materials & Labor)	\$825	\$125
Cost Per Usable Ton	\$239	\$25
Tons Applied During Patching Season	250	250
Total Usable Tons	3.5	5
Total Material Cost for Above	\$58,929	\$6,250

Annual Savings: \$52,679

Total Usable Tons – With a traditional method, approximately 30% of material is not usable due to cooling during transportation. 🏠 **\$25 per ton** is an average fully-loaded cost per ton using a **Bagela BA7000**. This average includes labor, input material, maintenance, and fuel/equipment depreciation. Please contact **Pavement Recyclers** for details. Recycled asphalt is **100% reusable**. There is no waste or spoilage. Any leftover material can be reheated and reused.



Get full specs and more details at PavementRecyclers.com



70 Platt Road | Shelton, CT 06460
877.499.2221
sales@PavementRecyclers.com
PavementRecyclers.com

Members of:

